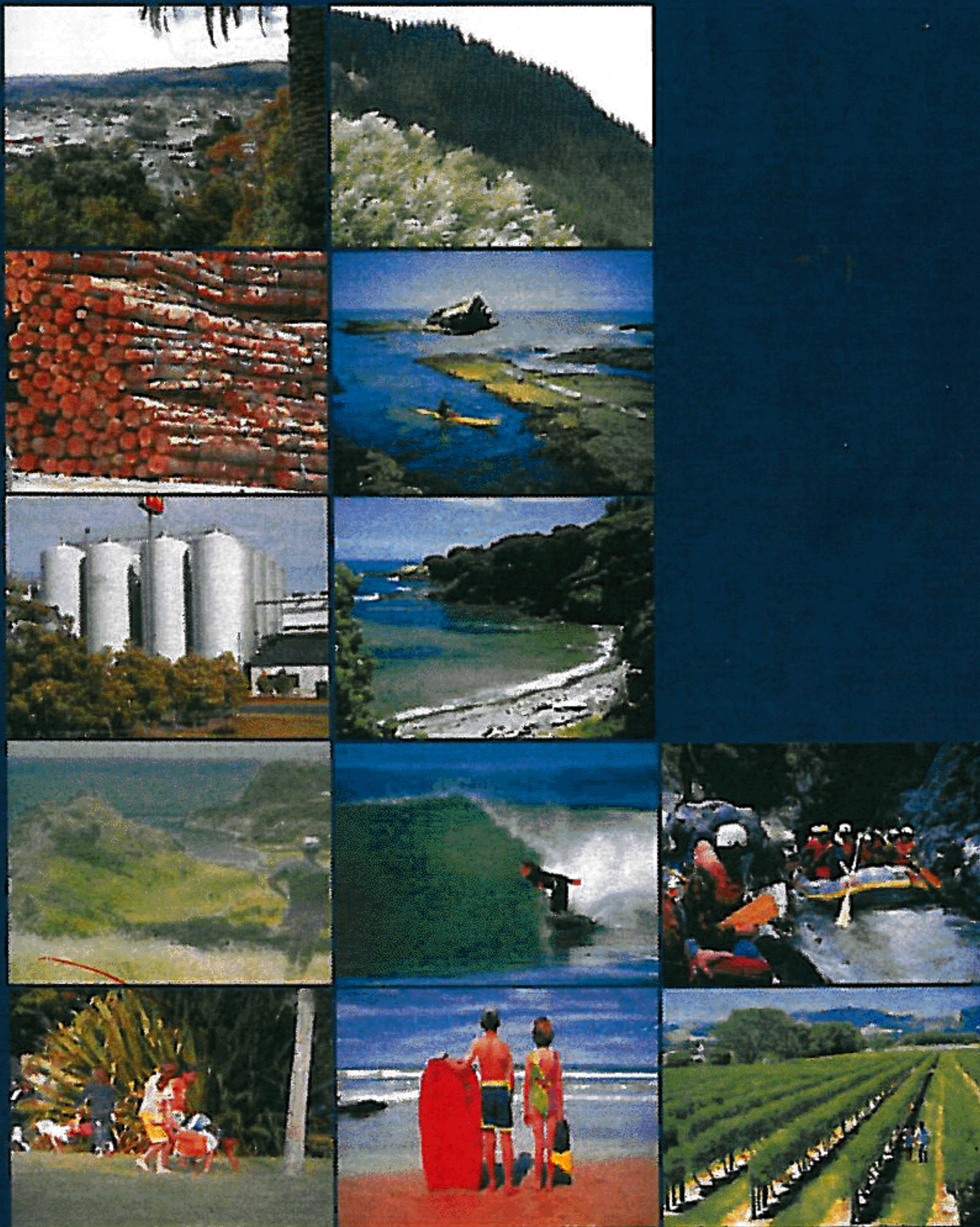


ISSN 1174 4573



2004 - 2005

**GISBORNE DISTRICT COUNCIL
ANNUAL REPORT**

Adopted: 31 October 2005

Mission Statement

To manage and enhance the district's physical, social, cultural and economic wellbeing efficiently, effectively and equitably.

This Annual Report was adopted by Council in accordance with Section 95 of the Local Government Act 2002.

Te Kupu Tataki

Kia aata whakaaro, me te tiaki ano hoki I nga kura taonga a Papatuanuku me ona ao, kia whakapumau hei painga mo nga whakatupuranga katoa.

Me te tautoko ano I nga tikanga totika nei whai oranga, hei whakapakari i te tinana me te wairua kia noho pai tatou ki a tatou.

Contents

» INTRODUCTION «	1	CCTO'S PERFORMANCE	68
MAYOR'S AND CHIEF EXECUTIVE'S FOREWORD	2	VARIATIONS TO THE LONG TERM COUNCIL COMMUNITY PLAN (LTCCP) FOR THE YEAR ENDED 30 JUNE 2005	69
COUNCIL'S FINANCIAL STATISTICS	4	MAORI PARTICIPATION IN DECISION-MAKING	71
» THE FINANCES «	5	» COUNCIL MANAGEMENT «	72
STATEMENT OF COMPLIANCE AND RESPONSIBILITY	6	GROUP ORGANISATIONAL STRUCTURE	73
AUDITOR'S REPORT	7	COUNCIL ORGANISATIONAL STRUCTURE.....	73
STATEMENT OF ACCOUNTING POLICIES	9	SCHEDULE OF COUNCILLORS	73
STATEMENT OF FINANCIAL PERFORMANCE.....	15	SCHEDULE OF PRINCIPAL OFFICERS AND AGENTS	74
STATEMENT OF FINANCIAL POSITION	15	EQUAL EMPLOYMENT OPPORTUNITIES AND OCCUPATIONAL SAFETY AND HEALTH	74
STATEMENT OF MOVEMENTS IN EQUITY	16	APPENDIX 1	75
STATEMENT OF CASH FLOWS	16		
STATEMENT OF COMMITMENTS.....	17		
STATEMENT OF FINANCIAL INVOLVEMENT IN CCTOs/CCOs AND OTHER COMPANIES OR ORGANISATIONS ...	18		
NOTES FOR THE ACCOUNTS	18		
» ACCOUNTABILITY INFORMATION «	32		
ANNUAL COMMUNITY SURVEY.....	33		
COST OF DEMOCRACY.....	33		
PRINCIPAL ADVISORY UNIT	35		
ASSET MANAGEMENT UNIT.....	40		
ENVIRONMENTAL AND SUSTAINABLE MANAGEMENT	50		
BUSINESS AND COMMUNITY UNITS	61		
SUPPORT SERVICES	67		