

The Finances



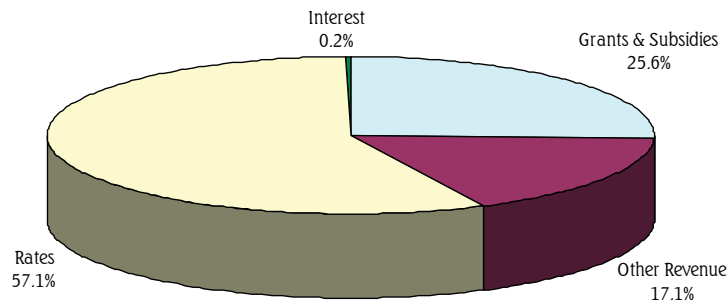
The Finances

Cautionary Note

Please note the Annual Plan is forecast information. It is prepared on the basis of best-estimate assumptions as to future events which the Council expects to take place as of July 2008.

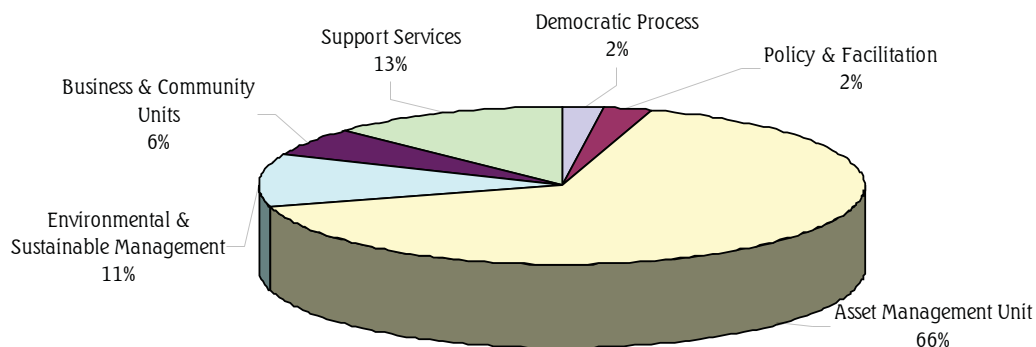
A number of assumptions need to be made about the economic and financial conditions, which will apply over the lifetime of the model. The major assumptions underpinning the Plan are set out on pages 47 - 52.

Revenue Breakdown for 2008 - 2009



The cost of our work programme will be funded by a mix of rates, levies, government grants and subsidies and various other forms of revenue.

Expenditure Breakdown for 2008 - 2009

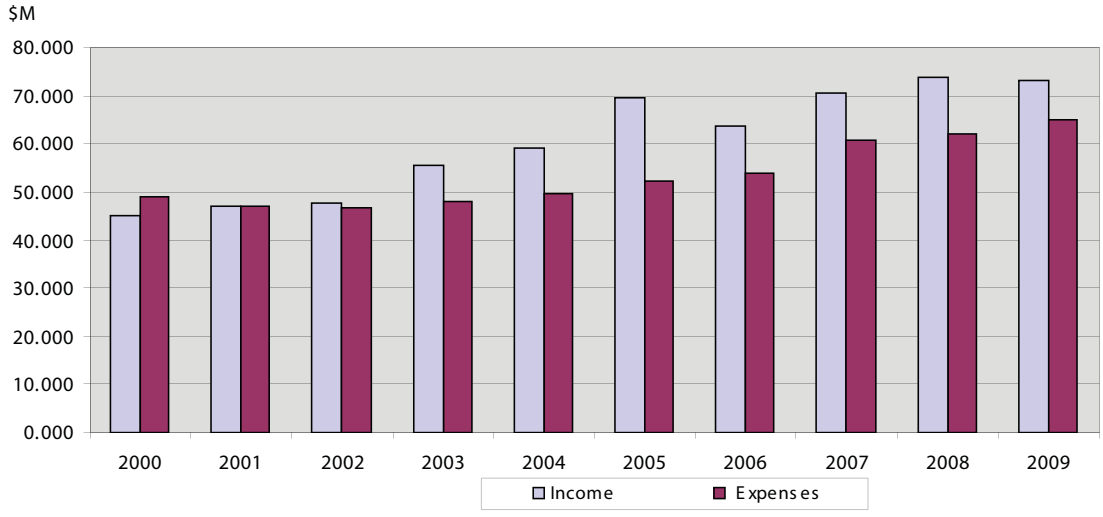


Over the next year the Council plans to spend \$65 million. This graph depicts the breakdown of the Council's total expenditure for 2008 - 2009.



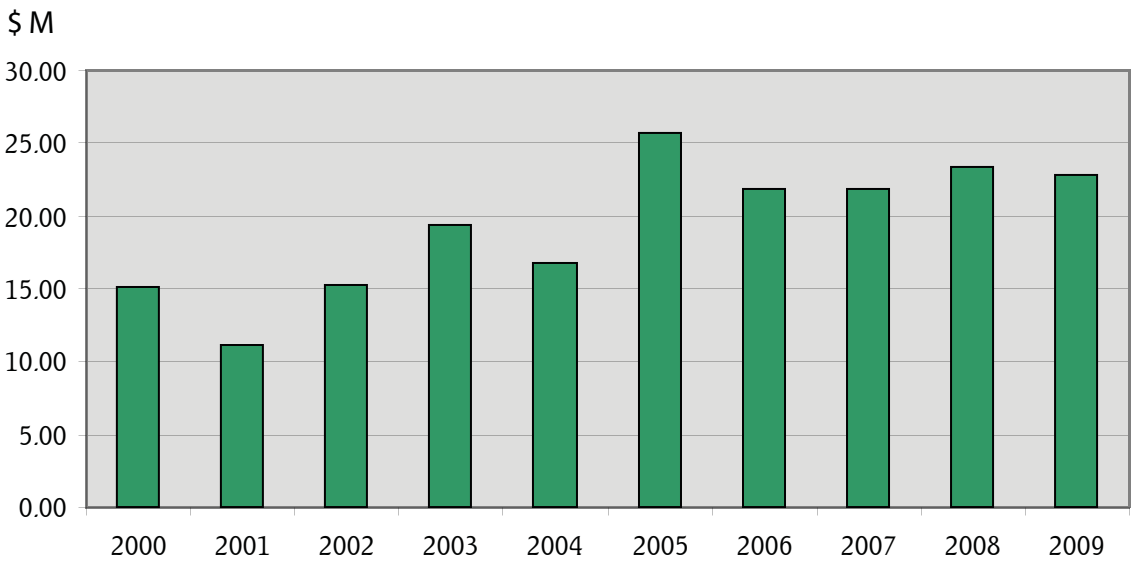
The Finances

Revenue and Expenditure



The 2003 - 2004 year, and those subsequent have seen an increase in external revenue. This is largely due to the Regional Development Rooding Capital programme. Although this increases the apparent performance of the organisation, it does not reduce rates as this revenue is for specific rooding capital projects and cannot be used to cover operational expenditure.

Capital Expenditure



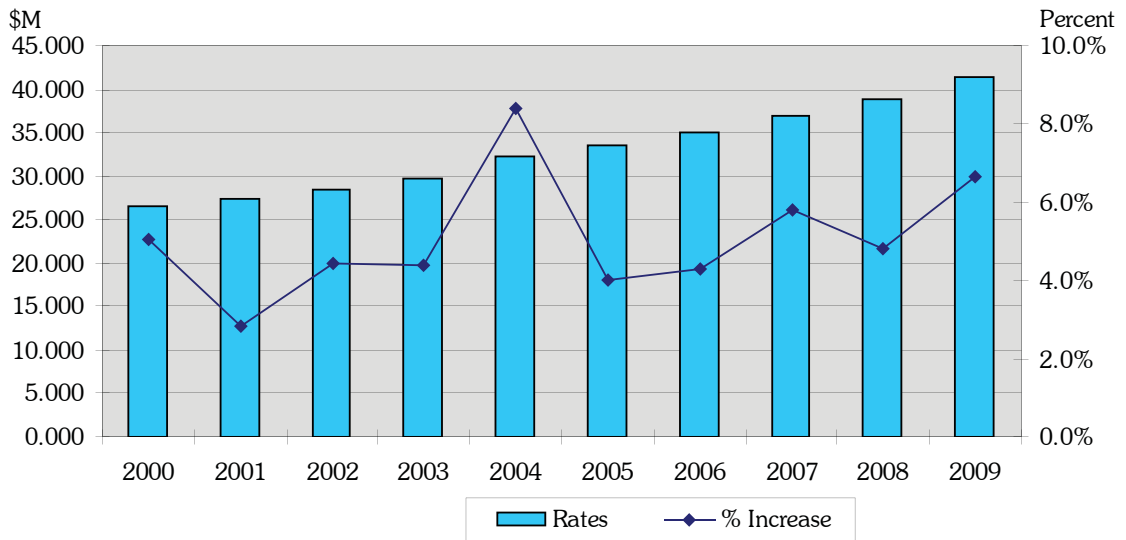
This graph shows the profile of capital expenditure over the last 10 years. Capital programmes are developed based on need and affordability.



The Finances

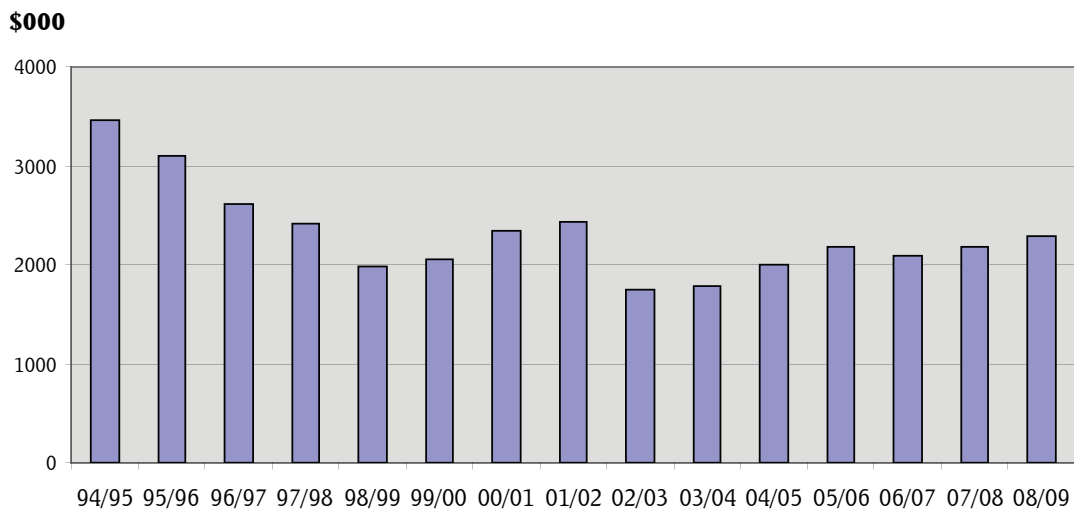


Rates Levied

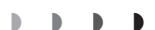


This Annual Plan sets a rates rise of 6.58% for the 2008 - 2009 year.

Total Rate Arrears



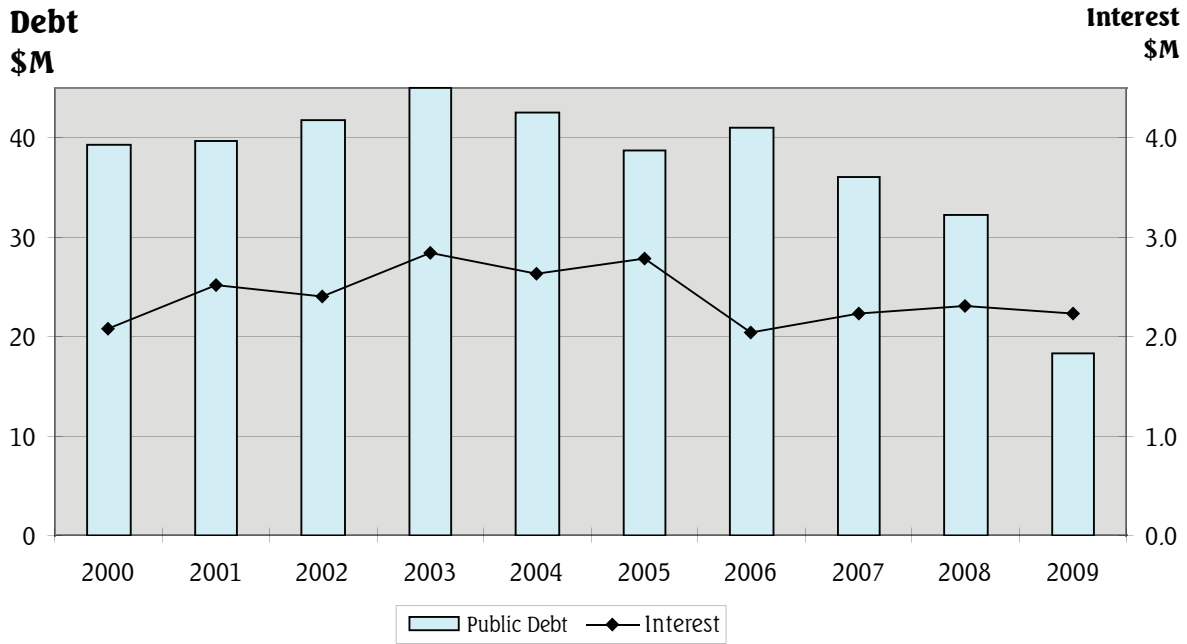
The total rates in arrears have reduced significantly since 1994/1995 and are expected to remain at the current level. The reduction is due to a stringent Credit Control Policy and utilisation of the Whenua Rahui Policy.





The Finances

Public Debt and Interest



What you get for your Rates

Note - Explanation of Groupings on following page

3 Waters includes wastewater, water supply and stormwater.

Recreation and Leisure Facilities includes reserves, library, pool and theatres.

Public Amenities includes conveniences and cemeteries.

Regulatory Services includes building and resource consents, environmental health and animal and stock control.

Democracy and Consultation includes cost of democracy, strategic and social policy and the maori liaison office.

Emergency Services includes rural fires and civil defence.

The contribution to rates from Council's business activities has not been included in this analysis.

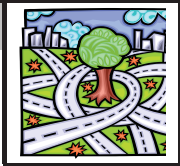






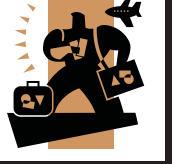







The Finances



What you get for your Rates

From each dollar, the Council spends:

22.0c	on Roothing		5.9c	on Conservation	
7.9c	on Rubbish Collection, Recycling and Transfer Stations		3.9c	on Rivers and Flood Control	
25.0c	on 3 Waters		3.2c	on Treasury and Administration	
12.4c	on Recreation and Leisure Facilities		1.8c	on Tourism and Economic Development	
5.9c	Democracy and Consultation		1.9c	on Public Amenities	
4.1c	on Regulatory Services		1.0c	on Community Development	
3.7c	on Planning		1.3c	on Emergency Services	